

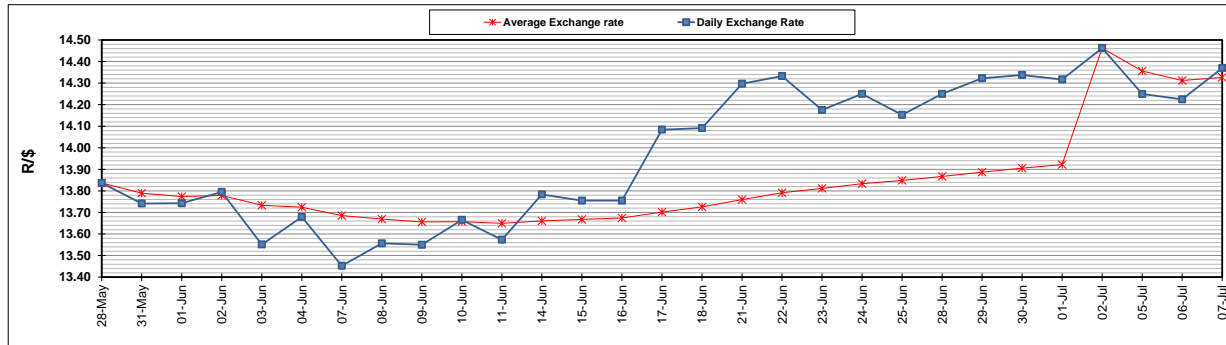
	PETROL 95 ULP	PETROL 93 ULP & LRP	DIESEL 0.05%	DIESEL 0.005%	ILL. PAR.
GAUTENG PUMP PRICE (SA c/l) AS FROM 07/07/2021	1,739.000	1,720.000	-	-	-
WHOLESALE PRICE (SA c/l) AS FROM 07/07/2021	-	-	1,508.620	1,512.020	913.488
SINGLE NATIONAL MAXIMUM RETAIL PRICE	-	-	-	-	1,150.000
BASIC FUEL PRICE - 07/07/2021 (SA c/l)	804.921	792.232	749.240	752.092	727.947
PRESS RELEASE CONTRIBUTION TO BFP 07/07/2021 - 07/07/2021 (SA c/l)	743.170	734.170	721.630	725.030	700.128
UNIT OVER/(UNDER) RECOVERY - 07/07/2021 (SA c/l)	(61.751)	(58.062)	(27.610)	(27.062)	(27.819)
AVERAGE BASIC FUEL PRICE 02/07/2021 - 07/07/2021	818.464	804.968	762.831	765.915	740.159
AVERAGE UNIT OVER/(UNDER) RECOVERY 02/07/2021 - 07/07/2021	(94.794)	(92.548)	(72.701)	(71.635)	(67.031)

ANALYSIS MOVEMENT OF AVERAGE OVER/(UNDER) RECOVERY

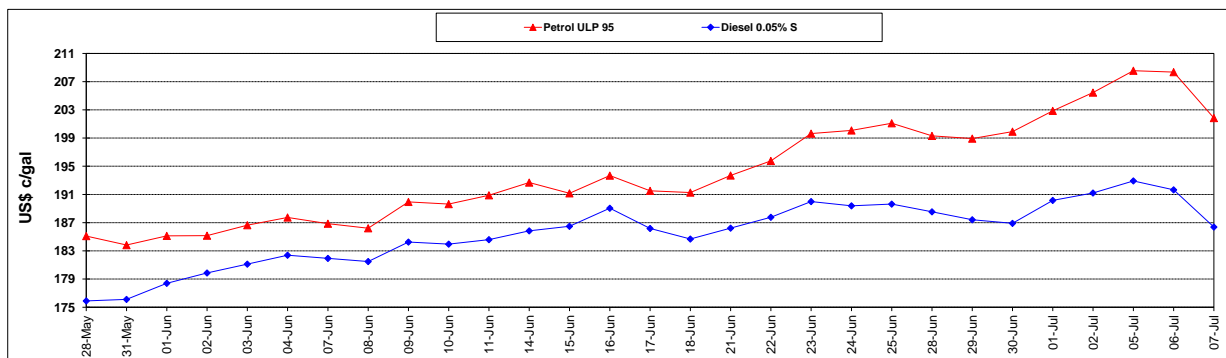
	PETROL 95	PETROL 93	DIESEL 0.05%	DIESEL 0.005%	ILL. PAR.
- MOVEMENT IN INTERNATIONAL PRODUCT PRICES	(71.674)	(69.809)	(51.152)	(49.999)	(46.123)
- MOVEMENT IN EXCHANGE RATE	(23.120)	(22.739)	(21.549)	(21.636)	(20.908)
AVERAGE UNIT OVER/(UNDER) RECOVERY 02/07/2021 - 07/07/2021	(94.794)	(92.548)	(72.701)	(71.635)	(67.031)

R/\$ EXCHANGE RATE - (R/\$14.3700- 07/07/2021)

EXCHANGE RATE USED IN BASIC FUEL PRICE



INTERNATIONAL PRODUCT PRICES OF BASKET USED IN BASIC FUEL PRICE



BASIC FUEL PRICE IN SA CENTS PER LITRE

